

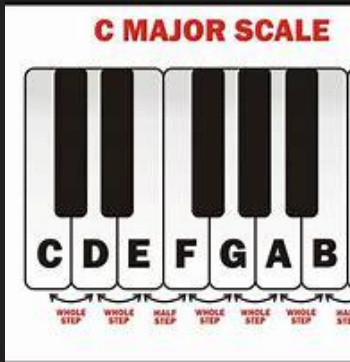
Introduction to Music Production

The screenshot displays a professional music production software interface, likely Ableton Live, with the following components:

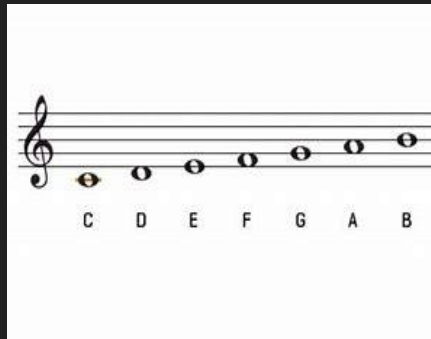
- Browser:** Located on the left, it shows a file tree with categories like 'Current project', 'Recent files', 'Plugin database', 'Plugin presets', 'Channel presets', 'Mixer presets', 'Scores', 'Backup', 'Clipboard files', 'Collected', 'Envelopes', 'Impulses', 'Misc', 'Packs', 'Projects', 'Projects bones', 'Recorded', 'Rendered', 'Sliced beats', 'Soundfonts', 'Speech', and 'User'.
- Channel Rack:** At the top left, it lists tracks such as 'Host 1', 'Harmor', 'Harmor #2', 'Love Ph...ency', and 'MIDI out'.
- Host 1 Velocity:** A piano roll view below the channel rack showing MIDI notes and their velocities.
- Playlist - Underworld:** The central area features a piano roll for 'Underworld' with tracks for 'Viola' (multiple instances), 'Cello Automation envelope', and 'Brass' (multiple instances). A white waveform is visible in the 'Underworld' track.
- Mixer - Piano:** The bottom section shows a multi-track mixer with faders, knobs, and solo/mute buttons for various instruments including 'Synth', 'Additive', 'Cello', 'Strings', 'Percussion', 'Piano', 'Brass', 'Strings', 'Trumpets', 'Bass Drum', 'Percussion 2', 'French Horn', 'Bass Drum', 'Percussion 3', 'Quiet', 'Underground', 'Tantara', 'Invisible', 'Under 2', 'Insert 2', 'Insert 3', 'Insert 4', 'Kawaii', 'Insert 5', 'Kawaii 2', 'Insert 6', 'Insert 7', 'Insert 8', 'Insert 9', and 'Insert 10'. A green arrow points from the 'Piano' track in the mixer to the 'Underworld' track in the playlist.
- Mixer - Piano (Right):** A detailed view of the mixer for the 'Piano' track, showing a list of slots (Slot 1 to Slot 10) with various processing modules like 'Maximus' and 'Fruity parametric EQ 2'.

Music Theory

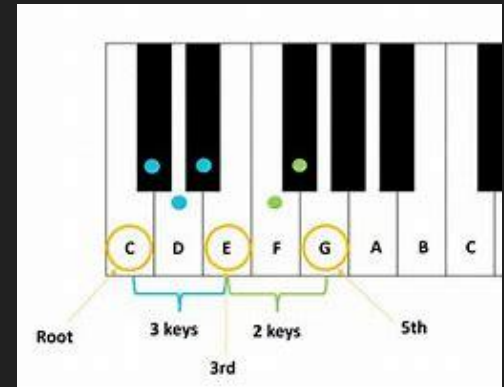
Notes



Scales



Chords



Every song is simply different chords and notes combined together in unique ways

The Four Step Process - S.L.A.M

S - Sound Design

L - Looping

A - Arrangement

M - Mixing/Mastering

Sound Design

The sounds you use

Common Example: Rock Bands

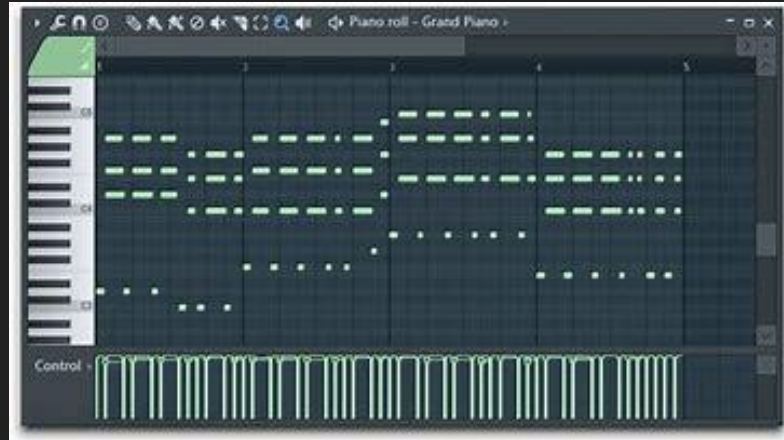
Rock music is defined by:

- **Electric Guitar**
- **Drumset (usually Acoustic)**
- **Vocals**
- **Electric Bass**



Looping

Using the instruments you chose to make chords, a melody, and a drum pattern that repeats (multiples of 4)



Arrangement

***Separating the loop by each instrument
and having them play in different
sections***

Mixing/Mastering

At this point, the “musical” part of the song is finished.

When we “Mix and Master” the song, we are making it sound better without changing the notes, rhythm, or arrangement (i.e. changing volume, special effects, etc.)

That's it.